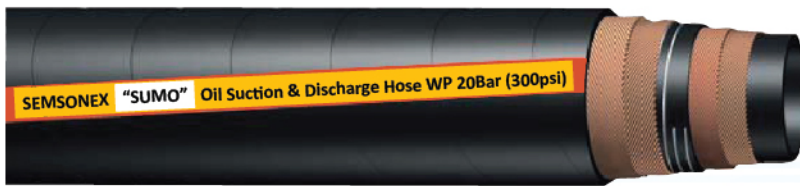


Semsonex

Industrial Hoses

Oil Suction and Discharge Hose-300psi (20bar)
Petroleum Hose.



Marking on Hose

SEMSONEX "SUMO" Oil Suction & Discharge Hose DN 100 (4 inch) WP 20Bar (300PSI) / BP 60BAR (900 Psi) ISO 1307 1Q2020

Oil Suction and Discharge Hose-200psi (20bar) Application Fields:

Lightweight, flexible hoses offering easy handling. Used for Transfer of petroleum products, High-pressure suction and discharge of petroleum products, Transfer and blending of petroleum products; transfer of crude oil, salt water, slurries and non-potable water

MANDREL BUILT HOSE

TUBE: High Oil Resistance Grade of NBR

REINFORCEMENT: High tensile helix wire embedded between layers of Nylon Cords..

COVER: EPDM blended cover resistant to water, weather and abrasion proof.

TEMPERATURE RANGE: -20°F to +180°F (-30°C to + 80°C)

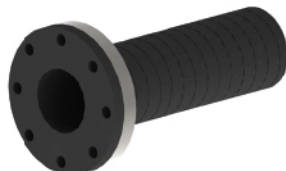
Table

Code	I.D.		O.D.		Standard Length		Bend Radius		Working Pressure	
	in	mm	in	mm	ft	m	in	mm	PSI	BAR
20-OSD 38	1 1/2	38.10	1.95	49.60	200	60/40	10	250	300	20
20-OSD 50	2	50.80	2.50	63.60	200	60/40	12	300	300	20
20-OSD 63	2 1/2	63.50	3.00	76.30	200	60/40	16	400	300	20
20-OSD 75	3	76.20	3.62	92.00	200	60/40	20	500	300	20
20-OSD 100	4	101.60	4.71	119.80	20	60/40	28	700	300	20
20-OSD 150	6	152.40	6.92	175.90	100	30	48	1,200	300	20
20-OSD 200	8	203.20	9.05	230.00	10	30	64	1,600	300	20

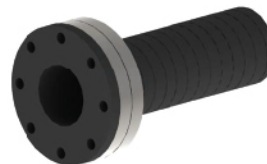
End Connections



Beaded (Rotating) Flanges



Fixed Flanges



Double Flanges

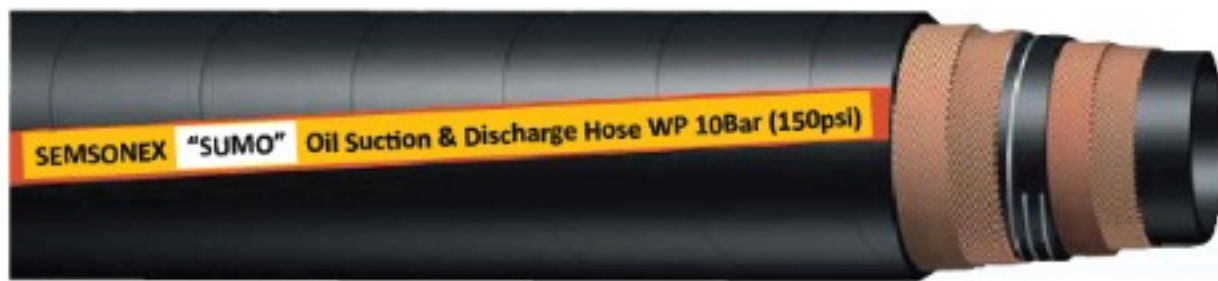


Spigot Flanges

Semsonex

Industrial Hoses

Oil Suction and Discharge Hose-150psi (10bar)
Petroleum Hose.



Marking on Hose

SEMSONEX "SUMO" Oil Suction & Discharge Hose DN 100 (4 inch) WP 10Bar (150PSI) / BP 30BAR (450 Psi) ISO 1307 1Q2020

Oil Suction and Discharge Hose-150psi (10bar) Application Fields:

Lightweight, flexible hoses offering easy handling. Used for Transfer of petroleum products, High-pressure suction and discharge of petroleum products, Transfer and blending of petroleum products; transfer of crude oil, salt water, slurries and non-potable water

MANDREL BUILT HOSE

TUBE: High Oil Resistance Grade of NBR

REINFORCEMENT: High tensile helix wire embedded between layers of Nylon Cords..

COVER: EPDM blended cover resistant to water, weather and abrasion proof.

TEMPERATURE RANGE: -20°F to +180°F (-30°C to + 80°C)

Table

Code	I.D.		O.D.		Standard Length		Bend Radius		Working Pressure		Approx Weight kg/m
	in	mm	in	mm	ft	m	in	mm	PSI	BAR	
OSD 38	1 1/2	38.10	1.95	49.60	200	60	10	250	150	10	1.25
OSD 50	2	50.80	2.50	63.60	200	60	12	300	150	10	1.87
OSD 63	2 1/2	63.50	3.00	76.30	200	60	16	400	150	10	2.30
OSD 75	3	76.20	3.62	92.00	200	60	20	500	150	10	3.23
OSD 100	4	101.60	4.71	119.80	200	60	28	700	150	10	4.97
OSD 150	6	152.40	6.92	175.90	100	30	48	1,200	150	10	9.30
OSD 200	8	203.20	9.05	230.00	10	30	64	1,600	150	10	14.5

- Standard Hose Length : 200ft(60m), 100ft(30m)

End Connections



Beaded (Rotating) Flanges



Fixed Flanges



Double Flanges



Spigot Flanges